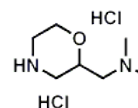


Certificate of Analysis

Date of Manufacture: 2012-03-06
Batch No: A20120306

Date of Analysis: 2013-03-07

Catalog No.: MO11132
Product Name: Dimethyl-morpholin-2-ylmethyl-amine dihydrochloride
Formula: $C_7H_{18}Cl_2N_2O$
Molecular Weight: 217.14
CAS Number: 122894-40-0



Items	Specifications	Results of Analysis
Appearance:	White solid	White solid
1H -NMR:	Consistent with structure	Consistent with structure
Assay (HPLC):	95.0%min	99.5%
Loss on Drying:	$\leq 0.5\%$	0.12%

Storage: Room Temperature, Dry
Origin of Country: P. R. China